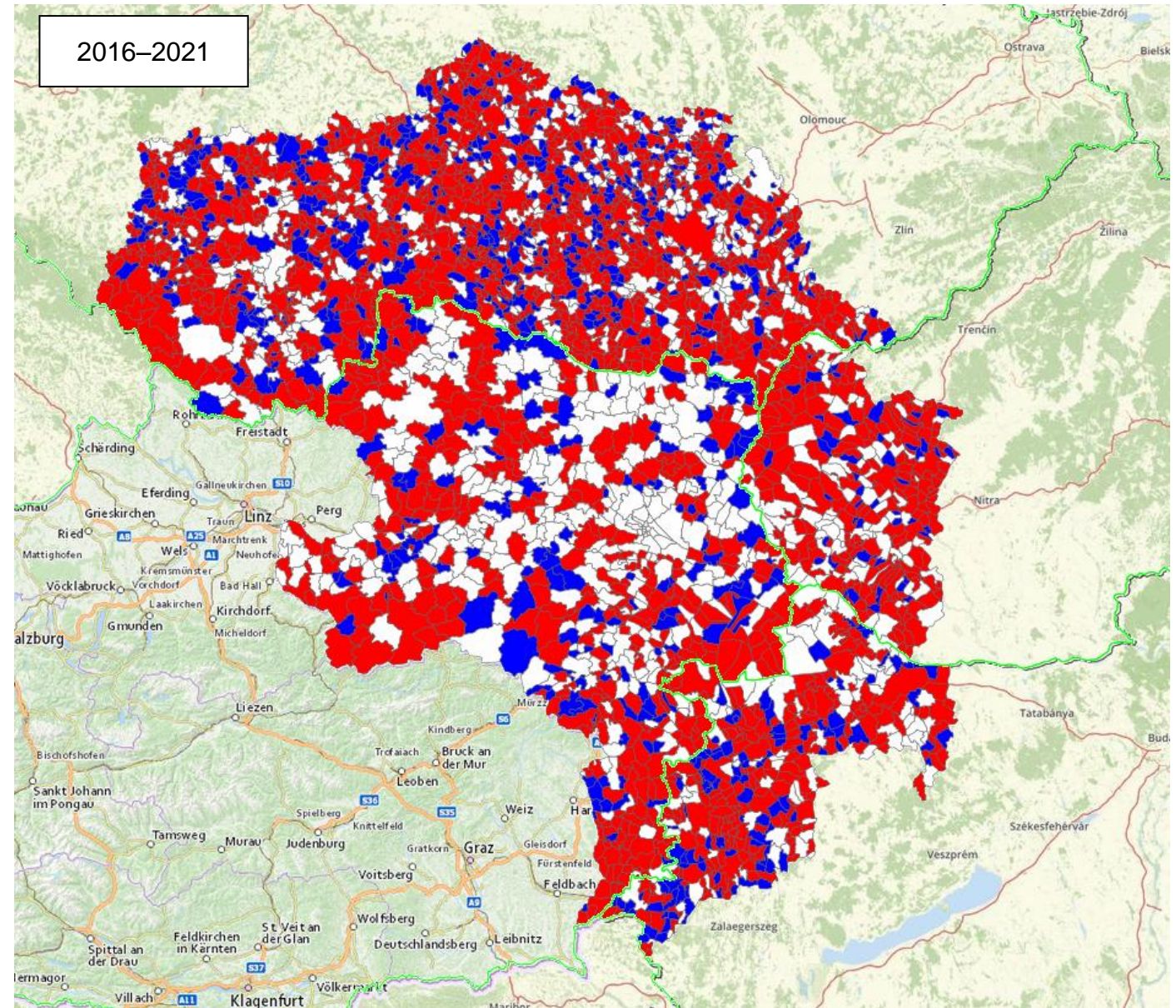
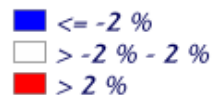
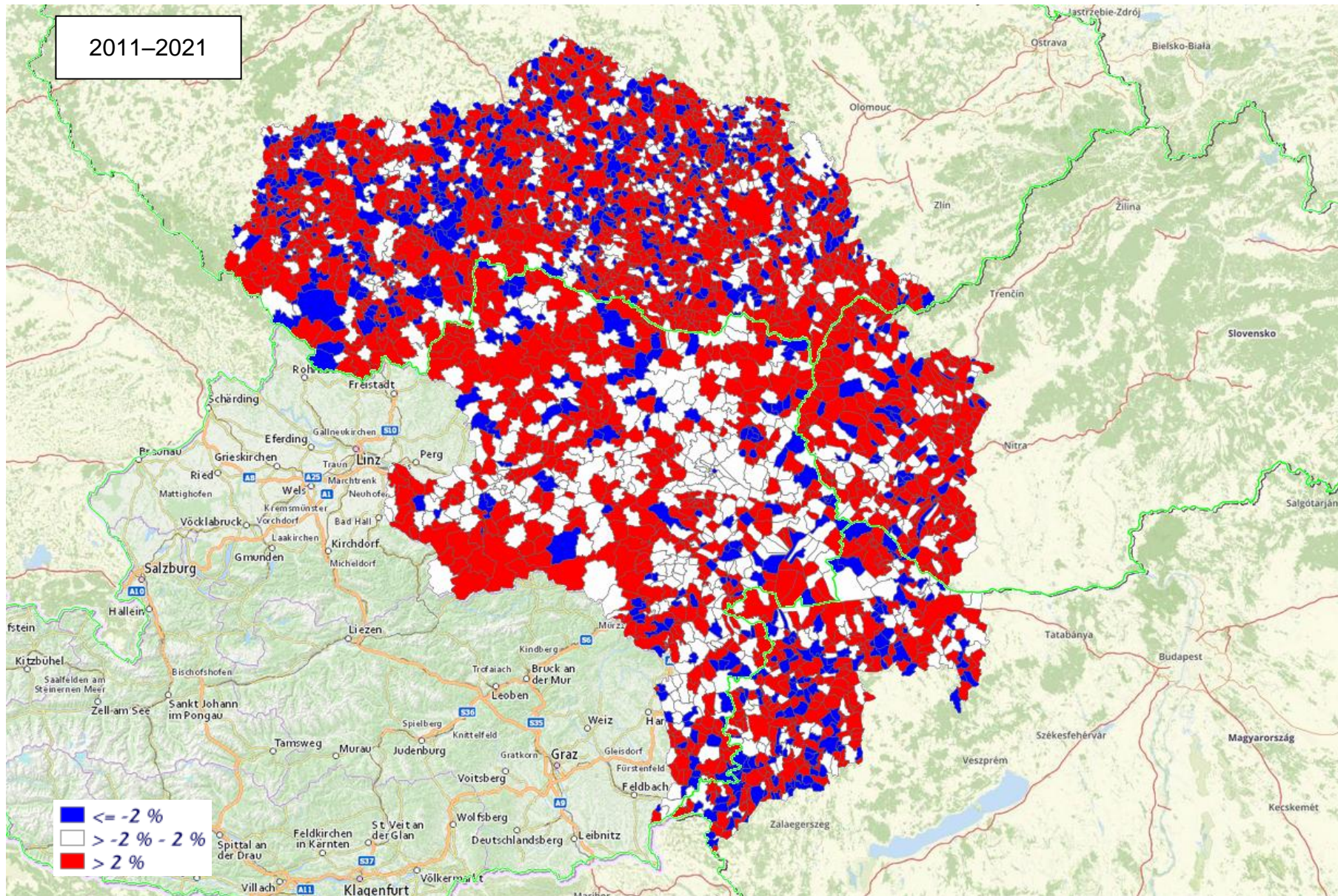


## Map of the month November 2023

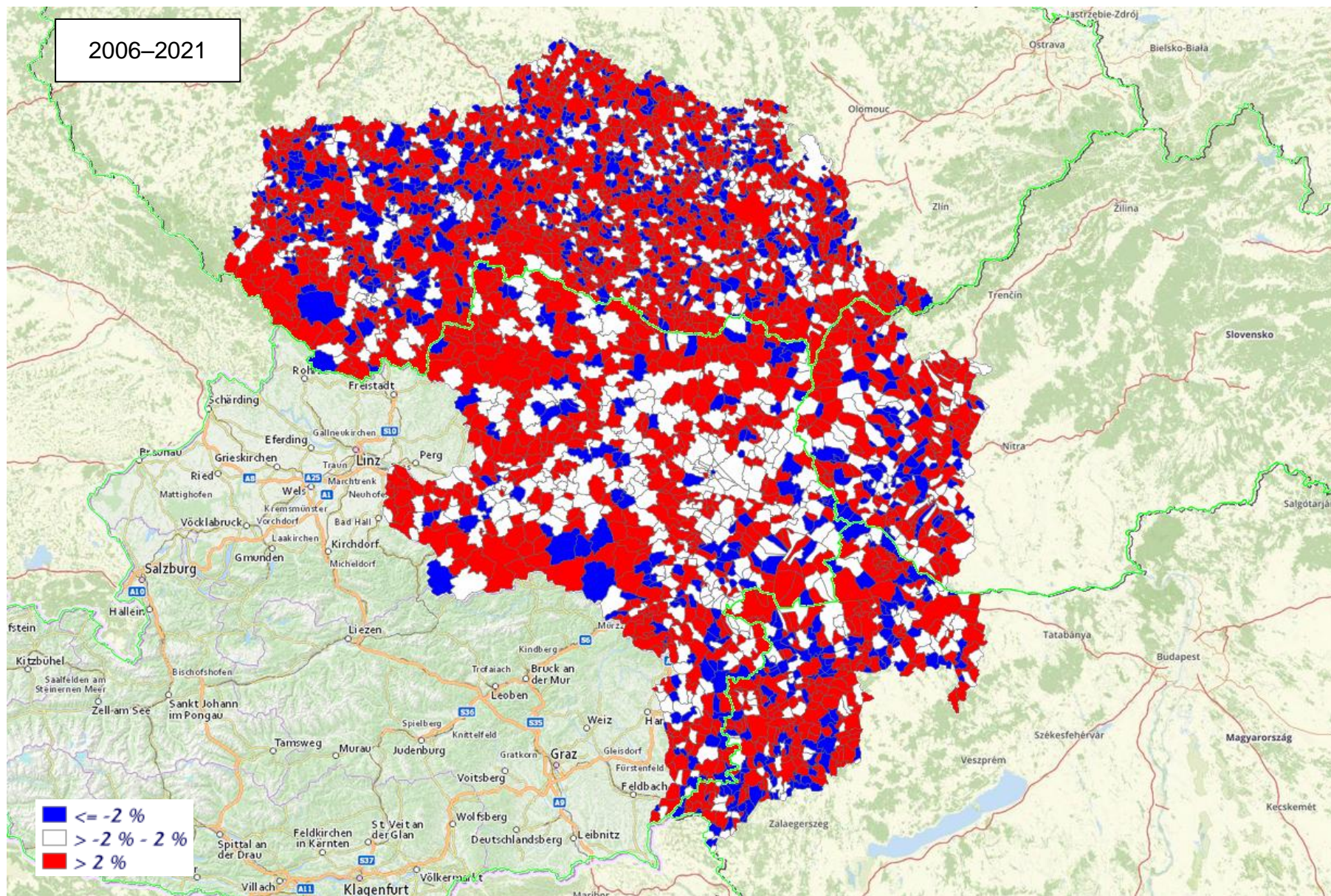
November 1<sup>st</sup> is All Saint's Day. Many people go to the cemetery around this day to remember their deceased family members and friends. Therefore, we take a look at the change of death rates in the Centropo region, comparing the change in deaths per 1,000 inhabitants. The map shows a comparison of 2016 and 2021, and we also analysed 2011–2021 as well as 2006–2021. All results have similar outputs, and as you can see on the map, there is obviously no spatial correlation with the change in death rates over time.



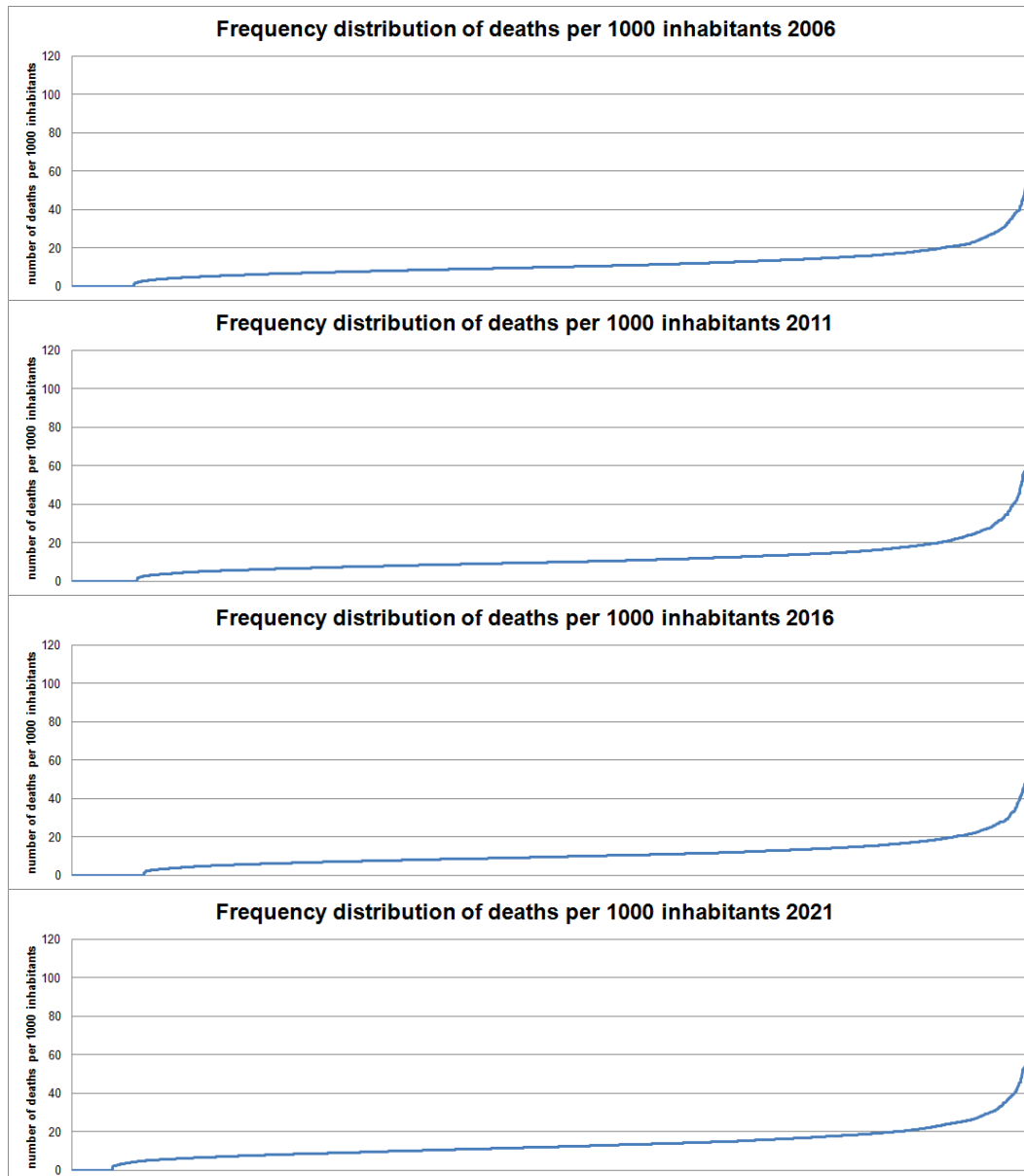












### Frequency distribution of death numbers per 1,000 inhabitants

Like the similar results for different years on the previous pages, also the frequency distribution of the death numbers per 1,000 inhabitants does not show any noticeable constant changes.

However, the 2021 graph shows a slightly higher level in the distribution curve, and also significantly less municipalities with no deaths at all. This allows to conclude that there were more deaths per 1000 inhabitants in the Centrope region during 2021 than in the years shown above, which seems conclusive in view of the progressive ageing of society.