

Outward-bound commuting 2011

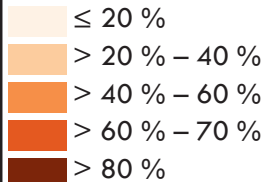
Ratio of outward-bound commuting and employed population

The outward-bound commuter ratio shows the percentage of the employed population leaving their residence to travel to their place of work.

Not surprisingly, the highest amount of outward-bound commuting is found in the suburban area of the bigger cities of the Centrope region: Brno, St. Pölten, Vienna, Eisenstadt, Győr. Also some district capitals can be identified by their brighter colours in the map.

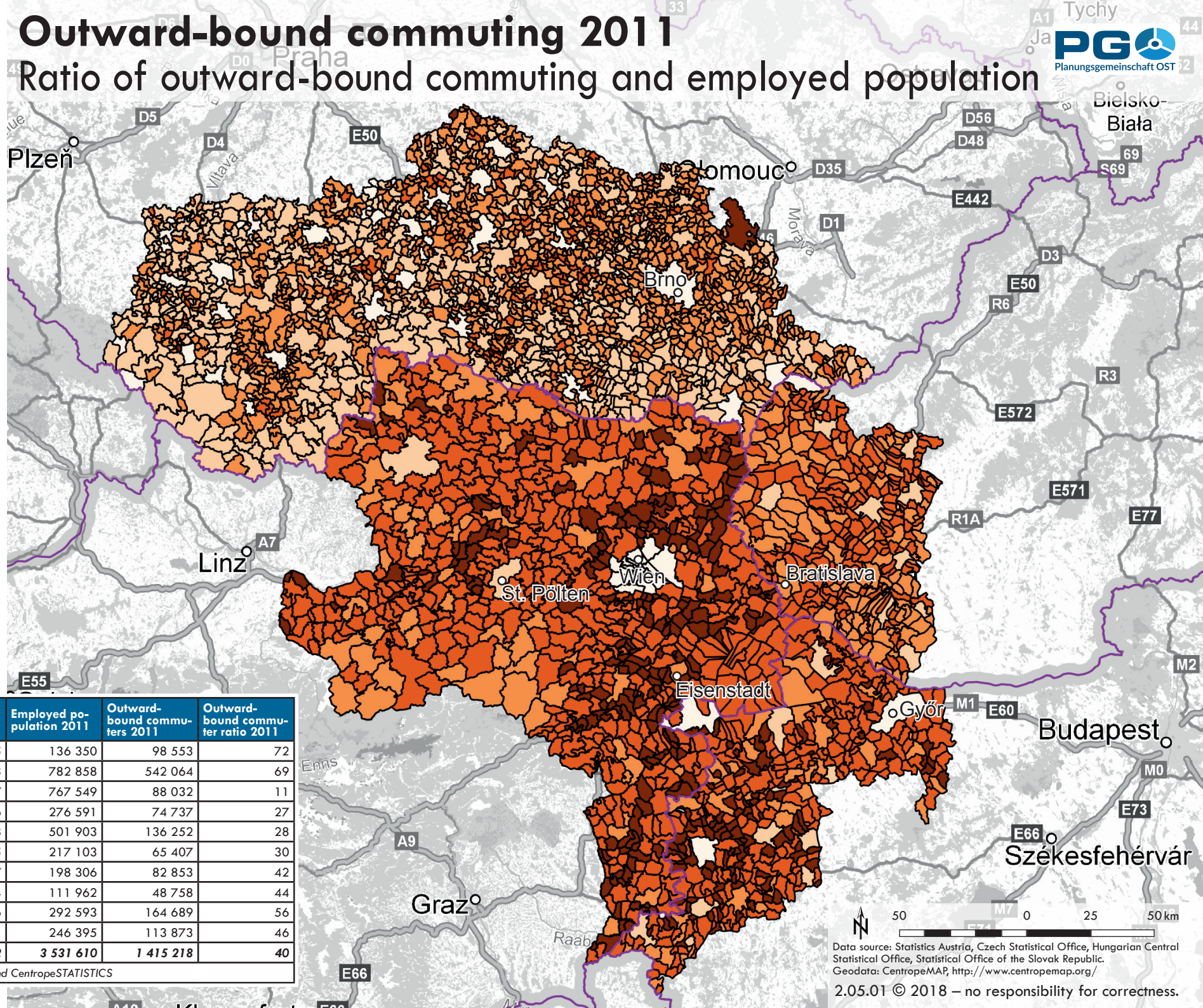
However, the Bratislava region does not follow this trend because many workers from the Slovak Republic commute to Austria across the borders.

Outward-bound commuter ratio 2011



County	Total population 2011	Employed population 2011	Outward-bound commuters 2011	Outward-bound commuter ratio 2011
Burgenland	285 685	136 350	98 553	72
Lower Austria	1 614 693	782 858	542 064	69
Vienna	1 714 227	767 549	88 032	11
Jihočeský	628 336	276 591	74 737	27
Jihomoravský	1 163 508	501 903	136 252	28
Vysočina	505 565	217 103	65 407	30
Győr-Moson-Sopron	447 787	198 306	82 853	42
Vas	256 374	111 962	48 758	44
Bratislavský	602 436	292 593	164 689	56
Trnavský	554 741	246 395	113 873	46
Centrope*	7 773 352	3 531 610	1 415 218	40

* Centrope as seen by CentropeMAP and CentropeSTATISTICS



Data source: Statistics Austria, Czech Statistical Office, Hungarian Central Statistical Office, Statistical Office of the Slovak Republic.
Geodata: CentropeMAP, <http://www.centropemap.org/>

2.05.01 © 2018 – no responsibility for correctness.