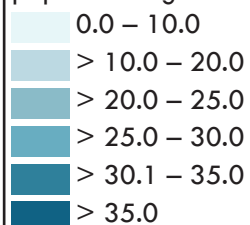


Old age dependency ratio 2020

Relation between 65+ and labour force population

The old age dependency ratio shows the relation between population aged 65 older and population in labour force age (15 to 64). The indicator measures the proportion of people retired to the economically active population. High values can be seen in the north and south of Lower Austria and in Burgenland as well as in the northern Czech part of Centrope whereas the Vienna and the Eastern parts of Centrope show a lower old age dependency ratio with the smallest average values in the Slovak part of Centrope.

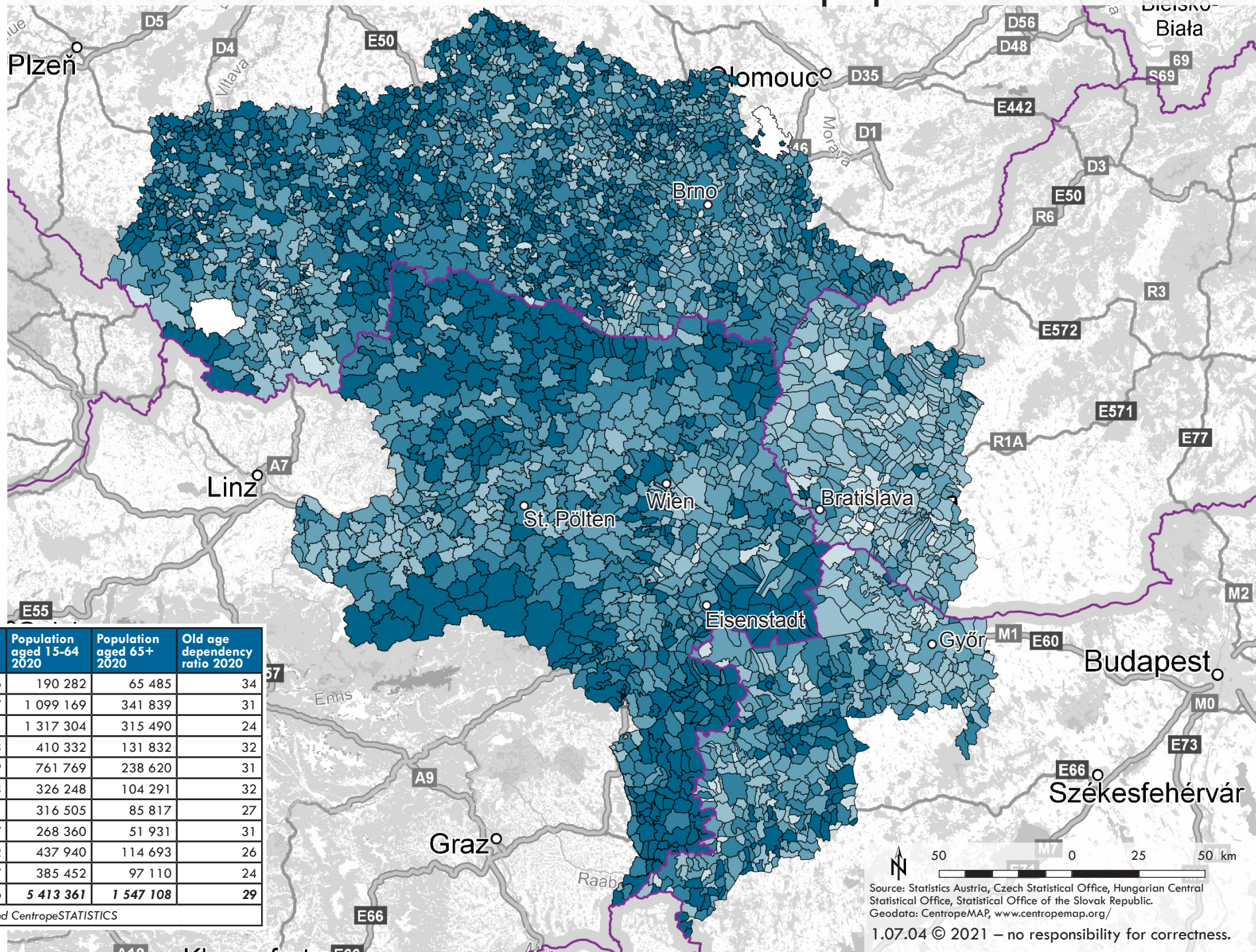
Old age dependency ratio¹ 2020 (population aged 65+ divided by population aged 15-64)



¹ https://en.wikipedia.org/wiki/Dependency_ratio

County	Total population 2020	Population aged 15-64 2020	Population aged 65+ 2020	Old age dependency ratio 2020
Burgenland	294 436	190 282	65 485	34
Lower Austria	1 684 287	1 099 169	341 839	31
Vienna	1 911 191	1 317 304	315 490	24
Jihočeský	644 083	410 332	131 832	32
Jihomoravský	1 191 989	761 769	238 620	31
Vysočina	509 813	326 248	104 291	32
Győr-Moson-Sopron	473 141	316 505	85 817	27
Vas	254 137	268 360	51 931	31
Bratislavský	669 592	437 940	114 693	26
Trnavský	564 917	385 452	97 110	24
Centrope*	8 197 586	5 413 361	1 547 108	29

* Centrope as seen by CentropeMAP and CentropeSTATISTICS



Source: Statistics Austria, Czech Statistical Office, Hungarian Central Statistical Office, Statistical Office of the Slovak Republic.
Geodata: CentropeMAP, www.centropemap.org/

1.07.04 © 2021 – no responsibility for correctness.