

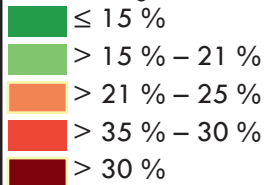
Super-aged Centrope?

Percentage of population aged 65 and more, 2022

A super-aged population is defined as having more than 21 % people aged 65 and older.¹ Centrope is currently quite far away from reaching the status of a super-aged region. In 2022, it was at 19 % with a trend for further growth.

The super-aged areas are mainly concentrated in the border areas of Austria towards the Czech Republic and in the Austrian province of Burgenland, also in the Semmering and Lilienfeld areas (Southwest of Lower Austria).

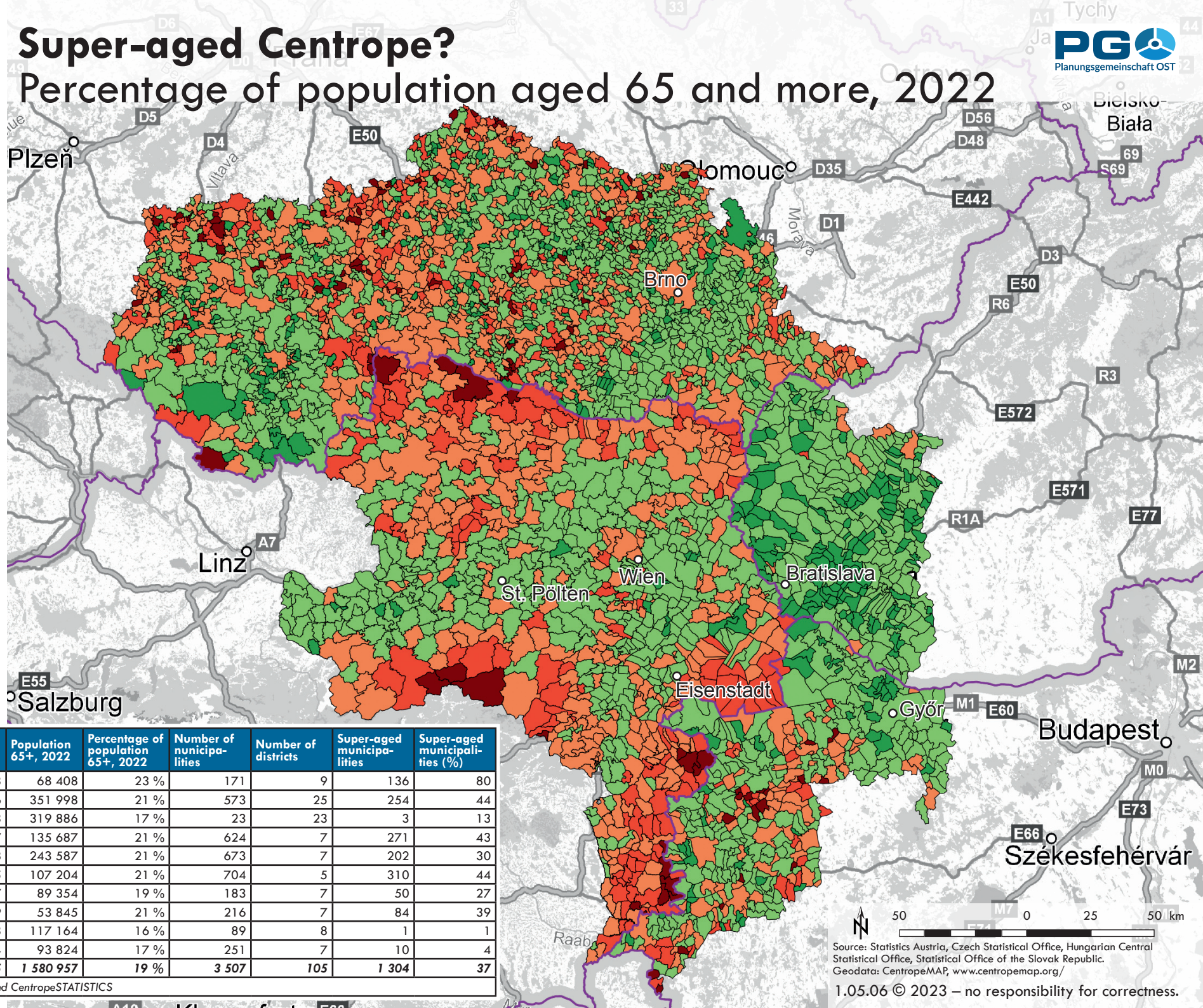
Percentage of population 2022 aged 65+



¹ definition of ISO – International Organization for Standardization, see <https://www.iso.org/news/Ref2170.htm>

County	Total population 2022	Population 65+, 2022	Percentage of population 65+, 2022	Number of municipalities	Number of districts	Super-aged municipalities	Super-aged municipalities (%)
Burgenland	297 583	68 408	23 %	171	9	136	80
Lower Austria	1 698 796	351 998	21 %	573	25	254	44
Vienna	1 931 593	319 886	17 %	23	23	3	13
Jihočeský	637 047	135 687	21 %	624	7	271	43
Jihomoravský	1 184 568	243 587	21 %	673	7	202	30
Vysočina	504 025	107 204	21 %	704	5	310	44
Győr-Moson-Sopron	479 347	89 354	19 %	183	7	50	27
Vas	253 429	53 845	21 %	216	7	84	39
Bratislavský	712 193	117 164	16 %	89	8	1	1
Trnavský	557 694	93 824	17 %	251	7	10	4
Centrope*	8 256 275	1 580 957	19 %	3 507	105	1 304	37

* Centrope as seen by CentropeMAP and CentropeSTATISTICS



Source: Statistics Austria, Czech Statistical Office, Hungarian Central Statistical Office, Statistical Office of the Slovak Republic.
Geodata: CentropeMAP, www.centropemap.org/

1.05.06 © 2023 – no responsibility for correctness.