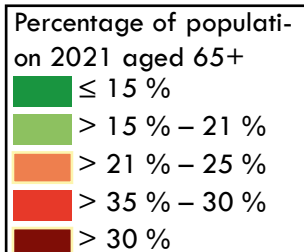


Super-aged Centrope?

Percentage of population aged 65 and more, 2021

A super-aged population is defined as having more than 21 % people aged 65 and older.¹ Centrope is currently quite far away from reaching the status of a super-aged region. In 2021, it was at 19 % with a trend for further growth.

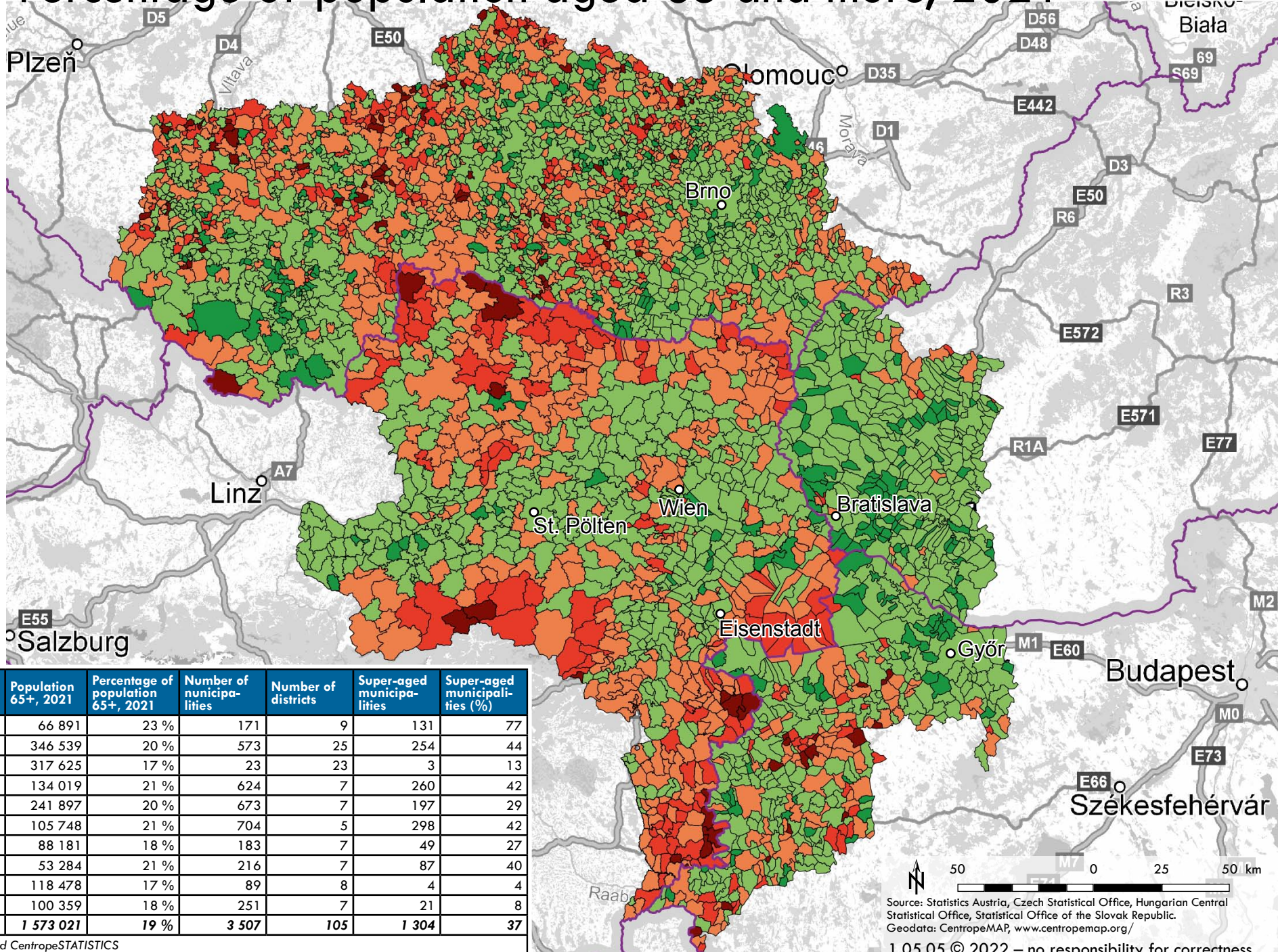
The super-aged areas are mainly concentrated in the border areas of Austria towards the Czech Republic and in the Austrian province of Burgenland, also in the Semmering and Lilienfeld areas (Southwest of Lower Austria).



¹ definition of ISO – International Organization for Standardization, see <https://www.iso.org/news/Ref2170.htm>

County	Total population 2021	Population 65+, 2021	Percentage of population 65+, 2021	Number of municipalities	Number of districts	Super-aged municipalities	Super-aged municipalities (%)
Burgenland	296 010	66 891	23 %	171	9	131	77
Lower Austria	1 690 879	346 539	20 %	573	25	254	44
Vienna	1 920 949	317 625	17 %	23	23	3	13
Jihočeský	643 551	134 019	21 %	624	7	260	42
Jihomoravský	1 195 327	241 897	20 %	673	7	197	29
Vysočina	508 852	105 748	21 %	704	5	298	42
Győr-Moson-Sopron	478 281	88 181	18 %	183	7	49	27
Vas	253 494	53 284	21 %	216	7	87	40
Bratislavský	677 024	118 478	17 %	89	8	4	4
Trnavský	565 324	100 359	18 %	251	7	21	8
Centrope*	8 229 691	1 573 021	19 %	3 507	105	1 304	37

* Centrope as seen by Centropemap and Centropestatistics



Source: Statistics Austria, Czech Statistical Office, Hungarian Central Statistical Office, Statistical Office of the Slovak Republic.
Geodata: Centropemap, www.centropemap.org/