

## How to launch CentropeMAP

CentropeMAP is a web-based map viewing client and does not need any additional piece of software to be installed on your computer. Just start your default web browser and open <http://map.centropemap.org>. This will take you immediately to the CentropeMAP geoportal. The web page (later on also referred to as map window) is divided into several sections as displayed in the illustration above. We will stick to these terms throughout this manual to avoid confusion.

The **menu** shows some helpful links and allows you to open CentropeSTATISTICS.

The **map** is displayed on the right side of your screen. It automatically adjusts to your screen size and resolution and will work properly at least up to full HD size (1920 x 1080 pixels). Around the map, you see further elements such as the header, the footer, the overview, the navigation, and the layer tree. Use the navigation area to set a zoom level of the map: you can either click on (+) to zoom in by one level or (-) to zoom out by one level or you can directly jump to any zoom level by clicking on the dots between (+) and (-). Click the world icon to zoom out as much as possible. Click the magnifying glass icon to select a zoom area by dragging a rectangle. The mouse pointer turns into crosslines. Place the mouse pointer somewhere over the map, then click and hold down the left mouse button. Now move the mouse and note the white rectangle between the starting point and your current mouse position. As soon as you release the left mouse button, CentropeMAP will zoom to the area covered by this white rectangle. Another way to zoom in or out is to move the mouse wheel: move it forward to zoom in and move it backward to zoom out. To improve performance and map legibility, CentropeMAP sticks to pre-defined zoom levels and does not allow scale levels in between.

In the **header** and **footer** sections of the map you can find some useful tools such as a background map switch, measurement tools, export function, another zoom level selector or

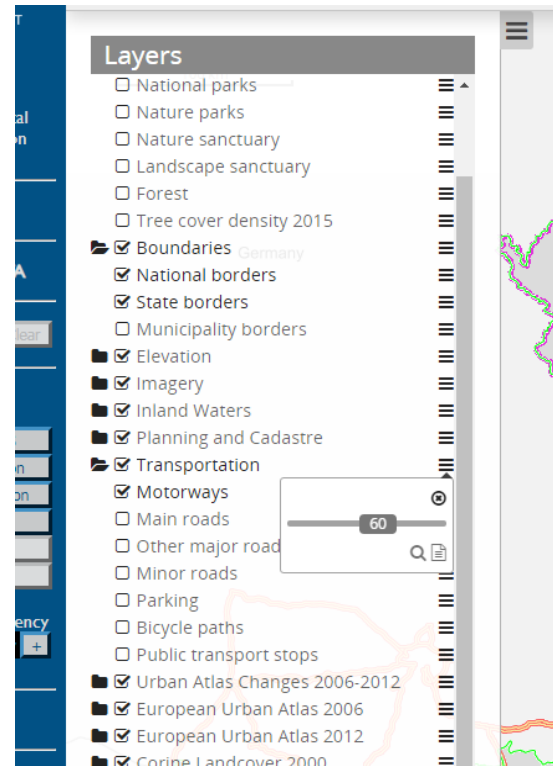
a coordinates display. The footer also features a “loading in progress” icon: a spinning symbol that keeps moving while map layers are being loaded from distributed servers.

The **overview** box shows a smaller scale map of your current map view so that you can more easily see which part of the region you are currently viewing. The rectangle inside the overview box illustrates the current map section. You can drag around this rectangle to change the current map section. Another way to drag the map is to simply move the mouse cursor somewhere over the map, hold down the left mouse button and move the image to the desired direction. Releasing the left mouse button initiates loading the new map image.

## Switching layers on or off

Depending on the width of your screen, the layer tree may cover quite a large area of the map. Therefore, you can minimize it at any time by clicking the white and green (-) symbol near the middle of the right edge of the layer tree. The layer tree folds then and leaves back a white and green (+) symbol which allows you to unfold the layer tree again.

The layer tree consists of several folders showing the topics of the map layers. Each folder represents a group of web map services which depend on each other. Click on any folder or folder name to open the folder and see the layers inside this folder. Click on the selectbox on the left side of the layer name to activate a layer. The layers inside the folder (and also the folder itself) are greyed out and an animated (spinning) loading symbol shows up. Usually, after a few seconds the selected layer should be displayed in the map and the spinning symbol disappears again.



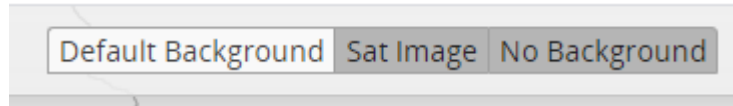
If for whatever reason a layer fails to load (most probably because one of the remote servers of our partners is not responding), the selected layer and its folder turn red and an exclamation mark symbol appears. In this case, please unselect the layer and try again after some minutes. If the problem persists, you may want to report the broken layer to the CentropeMAP administrators. To do so, just make a screenshot while the layer name is written in red letters and send this screenshot to the CentropeMAP team (contact e-mail see website imprint).

On the right side of each layer and folder name there are three short horizontal bars. If you click the bars next to a folder (see illustration), you get the possibility to adjust the transparency of all the layers in this folder. Move the slider to the left to make the layers more transparent. The number inside the slider shows the opacity level (0 is for full transparency, 100 for no transparency). If you click the magnifying glass icon, CentropeMAP zooms out to the full extent of the layers in the folder. If you click the text icon, you will see metadata for the layers in this folder.

If you click the bars next to a layer, you have the same options (only without transparency slider which is only available on folder level as all layers in one folder are dependent on each other and therefore cannot have different transparency settings).

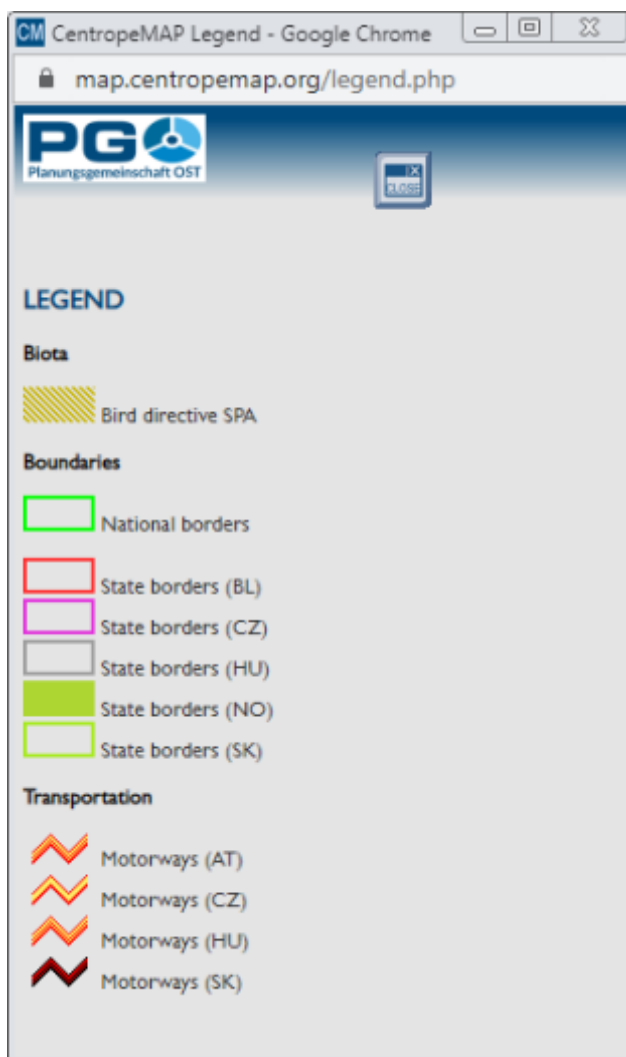
## Changing the background map

To change the background map, you have to click the background switch buttons which are located in the header. You can see all available options for the background map next to each other. The currently active background is highlighted. The default background shows a basemap of the Centrope region.



## Map legend

To see the map legend, click on “MAP LEGEND” in the left menu. An extra window pops up; it contains legend information for each layer. Some layers might have more than one entry because the layer is styled differently for different parts of the Centrope region (due to current lacks in geodata).



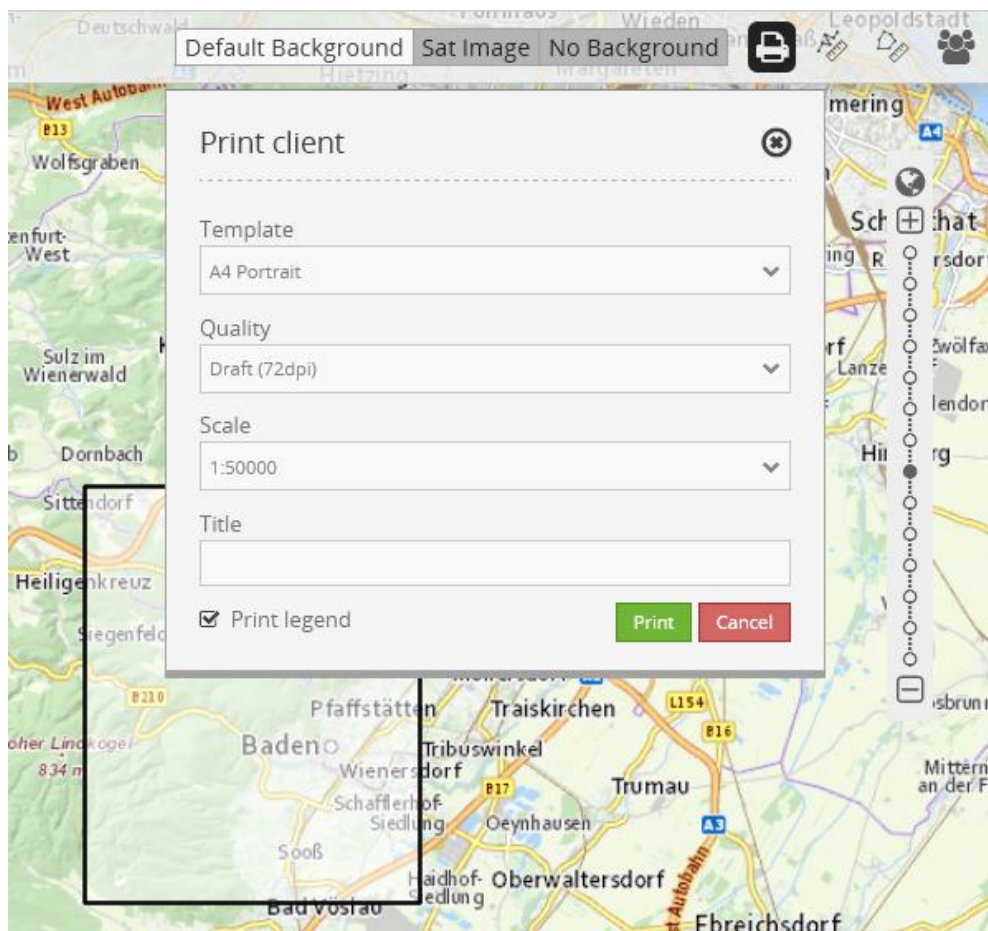
## Printing a map (PDF export function)

To create a PDF from your current map, click the PDF Export button in the header. The print dialogue pops up (see illustration). You can select between different templates varying in format (A3 or A4 size) and orientation (portrait or landscape). Below you select the graphics quality which can be screen resolution (72 dpi) or slightly better (96 dpi).

The reason why we cannot offer a standard print resolution of 300 dpi is as follows: CentropeMAP receives its map content from distributed servers all over the Centrope region. Most of them have a limitation to the maximum image size in pixels. The better the print quality (= image resolution), the higher the number of pixels in an image covering the same region. To avoid error messages and incomplete maps, we are only offering quality options which are almost unlikely to invoke error messages from remote servers.

Next, select the desired map scale. All zoom levels from the map view are available. Having selected a zoom level, you will see a rectangle inside the map window showing you the extent of the map which will be covered by your PDF. You can alter the zoom level and the orientation to change size and orientation of this rectangle, and you can drag around the rectangle in your map to adjust it to the map content of your choice. If you like, you can also add a title which will be shown as text above the map in your PDF output.

Having adjusted all options, click the green “Print” button and wait a couple of seconds (may also be up to a minute depending on variety of map content) until you are prompted to save a PDF file to your local disk. You can then create further PDFs if you like or press the red “Cancel” button to close the print dialogue.



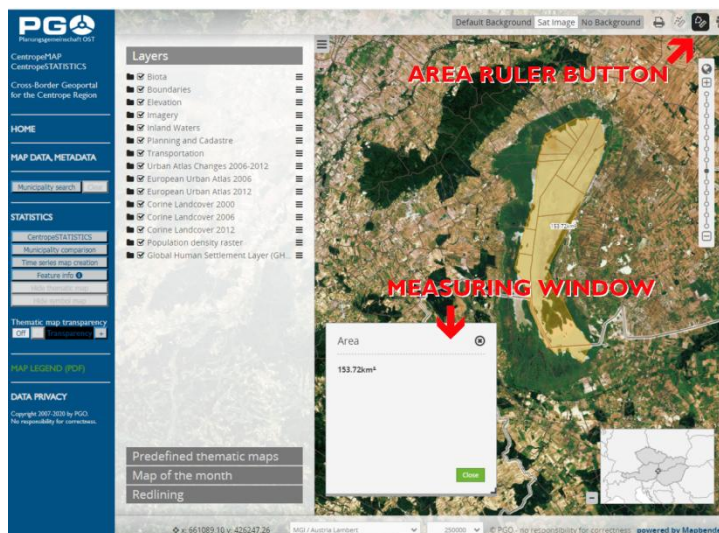


## Measuring

To measure a distance, activate the line ruler with a click on the line ruler button in the header area. An overlay labelled “Distance” pops up. To start measuring, move the mouse cursor to the point where you want to start to measure. Click the left mouse button to start. The mouse cursor is now drawing a thin orange line to illustrate your measurement. Your measuring route may consist of a start point and an end point only, but it also may have intermediate points. For any intermediate point, move the mouse cursor over the intermediate point and click the left mouse button. To end your distance measurement, double-click the left mouse button at the last point of your measured route. The parts of your route are now summed up and displayed in bold letters as last line in the distance overlay. To close the distance overlay, hit “Close” in the distance overlay or click on the line ruler button in the header area. Do not forget to copy or write down the result of your measurement if necessary because the measured distances are neither kept as numbers nor as lines when the distance overlay is closed.



To measure an area, activate the area ruler with a click on the area ruler button in the header area. An overlay labelled “Area” pops up. In this overlay you will see the measured area. To start measuring, move the mouse cursor to the point where you want to start to measure. Click the left mouse button to start. The cursor is now drawing an orange polygon to illustrate your measurement.



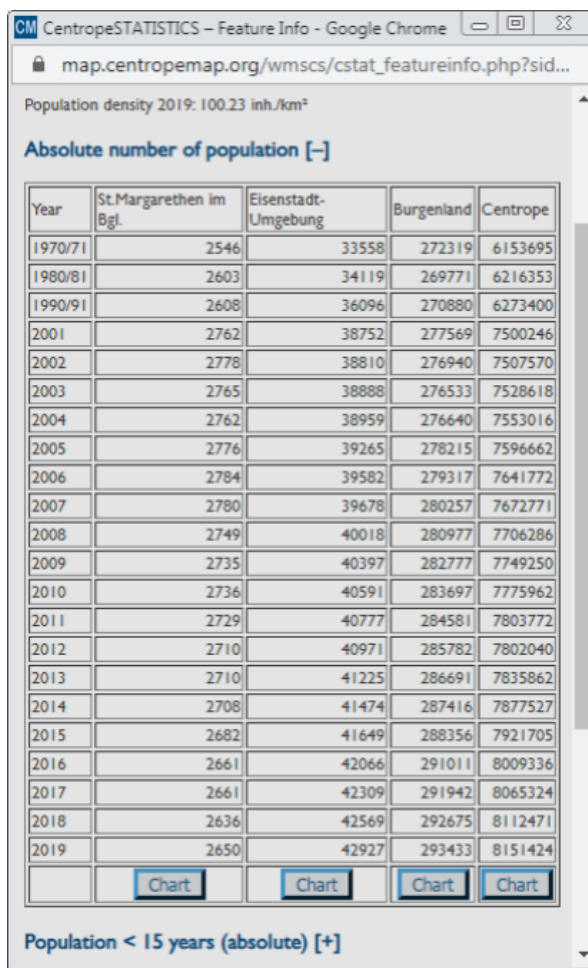
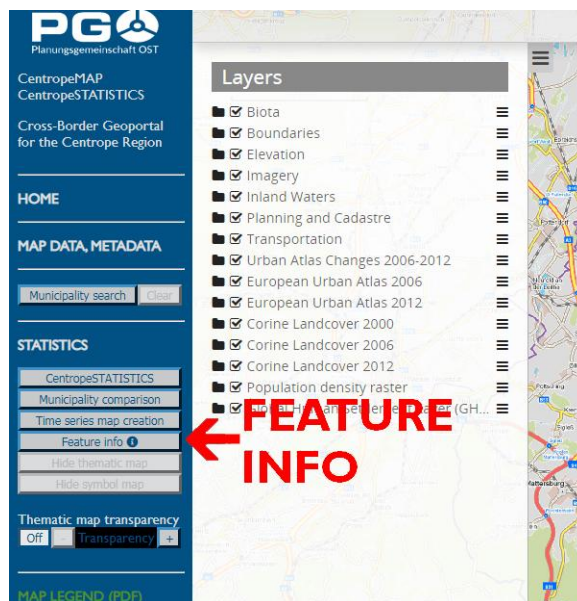
Add nodes to the measuring polygon by moving the mouse button along the edges of the area you want to measure and click the left mouse button every time the polygon outline should change its direction. The polygon is automatically drawn as closed figure so the measured area is covered in transparent orange colour. The intermediate result of your measurement is displayed in the area overlay. To finish the area measurement, double-click on the last node of your measurement polygon. The result is now displayed in bold letters in the area overlay. To close the area overlay, hit “Close” in the area overlay or click on the area ruler button in the header area. Do not forget to copy or write down the result of your area measurement if necessary because the measured area is neither kept as number nor as polygon when the area overlay is closed.

## Feature info

If you would like to know more about a certain spot in the map, you have the possibility to receive detailed feature information. To active feature info, click on the “Feature Info” button in the left menu of the map window. This is an “On/Off” button, so after your first click the button is going to stay pressed to indicate that the feature info tool is active. It stays active until you click on the “Feature Info” button in the left menu a second time to turn it off.

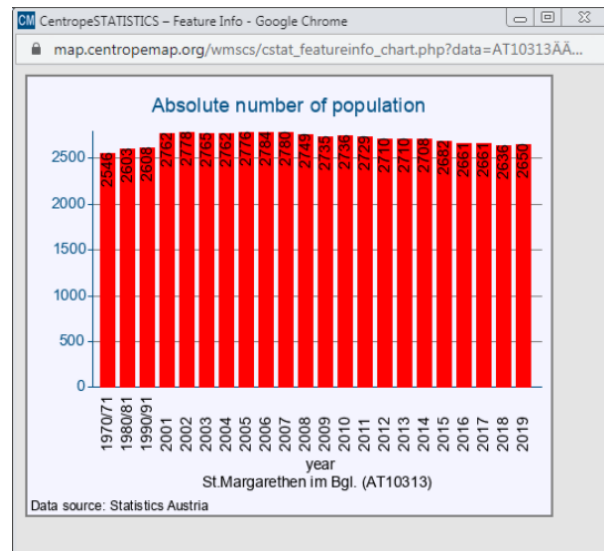
If you move the mouse pointer over the map with activated feature info, you can see that the pointer changes from the standard arrow to an arrow with question mark. To receive detailed feature information, just click on the desired spot in the map. Relevant information is going to be displayed in a pop-up window.

If there is no thematic map active, basic information on the selected municipality is presented. Detailed indicators are displayed with expandable headlines. Click on a headline to show detailed figures for a topic. Each detailed table has chart button at the bottom to



display the shown figures as charts for the selected municipality, the district, the county (state) or the whole Centrope region.

If a thematic map is active, only information on the thematic map's topic is presented.



## Changing the projection

By default, CentropeMAP uses the geographic projection EPSG:3857 – WGS 84/Pseudo-Mercator. You can also display your map in Lat-Lon projection (EPSG:4326, WGS84). However, in this case the standard background map is not available. To change the projection of your map, click on the projection drop down in the footer area of the map window, then choose the desired projection.

