

Create your own maps online

Extensive cross border statistics database

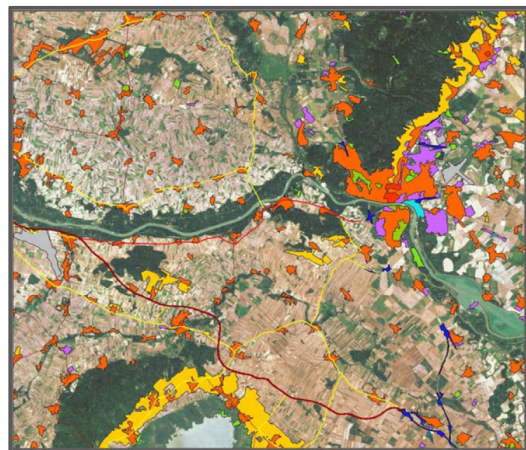
Perspectives

Behind CentropeMAP and CentropeSTATISTICS there is a cross-border database for both geodata and statistics. This database is growing – slowly, but steadily. Approximately twice a year experts from all partner regions meet to discuss the further extension of this database. For various reasons, the extension of the cross-border database is not an easy task:

All incoming datasets are checked on their compatibility and comparability with existing data. This is extremely important for statistical data because it has to be verified that datasets from different countries were collected in the same way before they are put together in one table. Otherwise, they cannot be compared with each other.

However, this situation is improving: The statistical offices of the partner regions are using guidelines from the European statistical office EUROSTAT, so data output from different regions and countries will be comparable.

EUROSTAT has been collecting national statistical data from member states for many years; however, these datasets are not available on municipality level. Country or NUTS 3 level datasets represent a pan-European perspective, but do not show the details of the Centrope Region.



CentropeMAP Partners



CentropeSTATISTICS Partners



Contact

The projects Centropemap and Centropestatistics are a co-operation of PGO (East Austrian Planning Association) and several partners from Burgenland, Lower Austria, Vienna, the Czech Republic, Slovakia, and Hungary who provide geodata as well as statistical data.

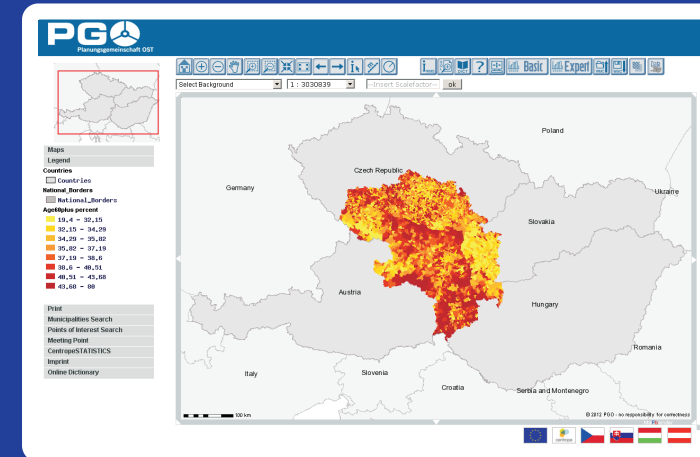
Contact data:
Planungsgemeinschaft Ost
Rockhgasse 6/3
1010 Vienna
Austria

T: +43 1 533 44 30
F: +43 1 533 44 30 – 24
M: post.pgo@noel.gv.at
W: www.planungsgemeinschaft-ost.at

Imprint

MULTIMEDIAPLAN.AT DI Manfred Schrenk KG, Lechergasse 4,
2320 Schwechat, Austria
on behalf of PGO, Rockhgasse 6/3, 1010 Vienna, Austria
© 2013 MULTIMEDIAPLAN.AT & PGO. All rights reserved.

CentropeMAP CentropeSTATISTICS *info*



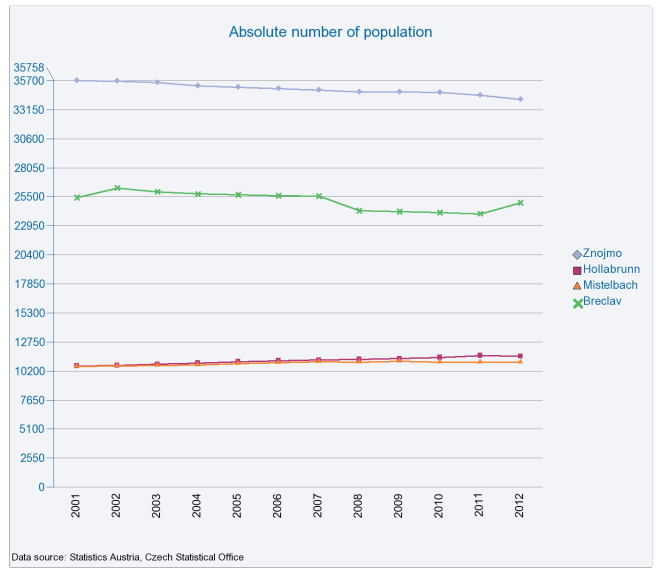
www.centropemap.org

4 countries

1 region

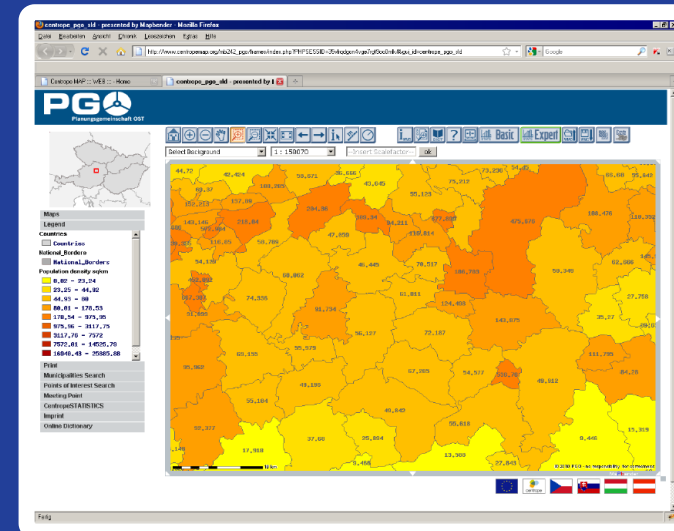
1 geoportal





CentropeMAP

CentropeMAP is an online geoportal, which means it collects web map services (WMS) from all parts of the Centrope Region and presents all these services to the user compiled into one single map. CentropeMAP emphasises on datasets that are of interest for spatial planning and similar professions, comprising multiple data layers from the fields of biota, boundaries, elevation, imagery/base maps, inland waters, planning/cadastre, structure, and transportation. Visit <http://map.centropemap.org> and give it a try!



Shortcut to geoportal:
<http://map.centropemap.org>

Introduction

The Centrope Region is situated at the mutual borders of Austria, the Czech Republic, Hungary, and Slovakia. Its aim is to foster cultural, ecologic and economic development in an area that was confronted with a difficult political situation over decades and is catching up steadily.

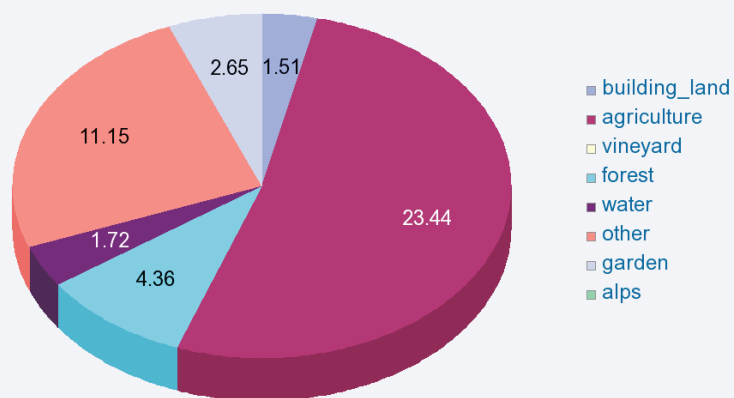
To help planners and stakeholders to get an overview of the Centrope region, the geoportal Centropemap went online in 2005 and was soon extended by a cross-border statistics database which is linked to the map view. This powerful tool allows you to convert statistical data into easily legible thematic maps and various types of charts on the fly.

Region

CentropemapSTATISTICS joins data from the Czech Republic (regions Vysocina, Jihocesky, Jihomoravsky), Slovakia (regions Bratislavsky, Trnavsky), Hungary (counties Győr-Moson-Sopron, Vas) and Austria (federal states Burgenland, Lower Austria, Vienna).

Land Use per Categories (square kilometers)

Selection: year = 2009, municipality AT32419: Schwechat



Data source: Statistics Austria

CentropemapSTATISTICS

Planners and stakeholders receive a great help from maps. Also, statistical data is important to analyse a region. So why not combine maps and statistics and create a combined view of statistical data directly in a map?

CentropemapSTATISTICS features ready-made thematic maps as well as an expert mode which gives full access to the whole Centrope cross-border statistics database. Note that you can also download these data and, for example, use it in a spreadsheet.

While creating your thematic map or chart, you can set several options to adjust content and layout (size, colours, chart type, legend, ...).

Almost all datasets are collected in a time series so that the development of the region can be explored in yearly steps since 2001; the data range comprises various fields like population statistics, population development and projection as well as land use, educational statistics, tourism or migration.